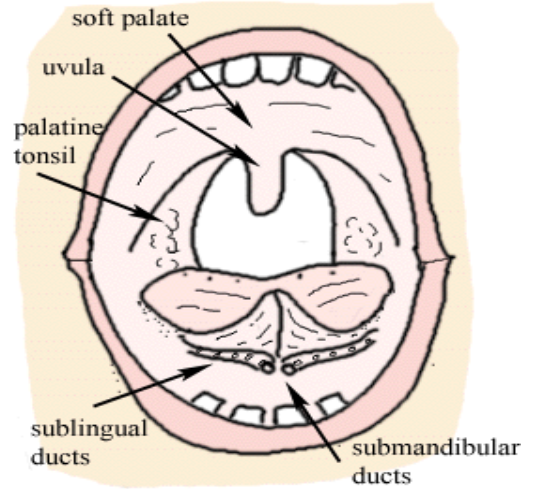


**ROUTES AND SITES OF EXPOSURE  
TO POISONS  
GASTROINTESTINAL TRACT (INGESTION)**

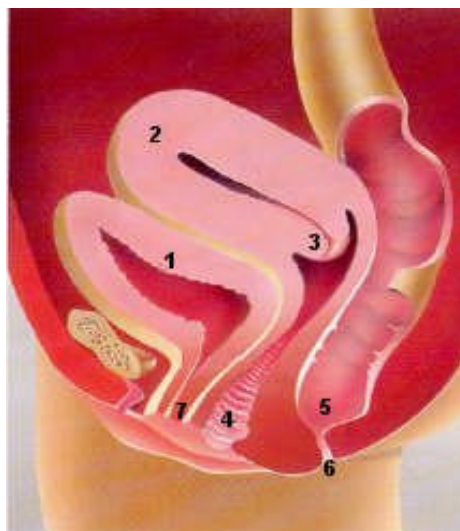
**MOUTH**



**SUBLINGUAL**

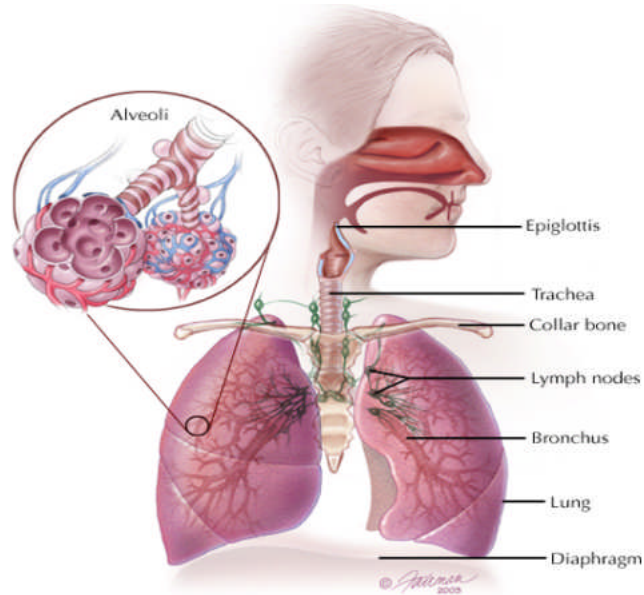


**RECTAL**

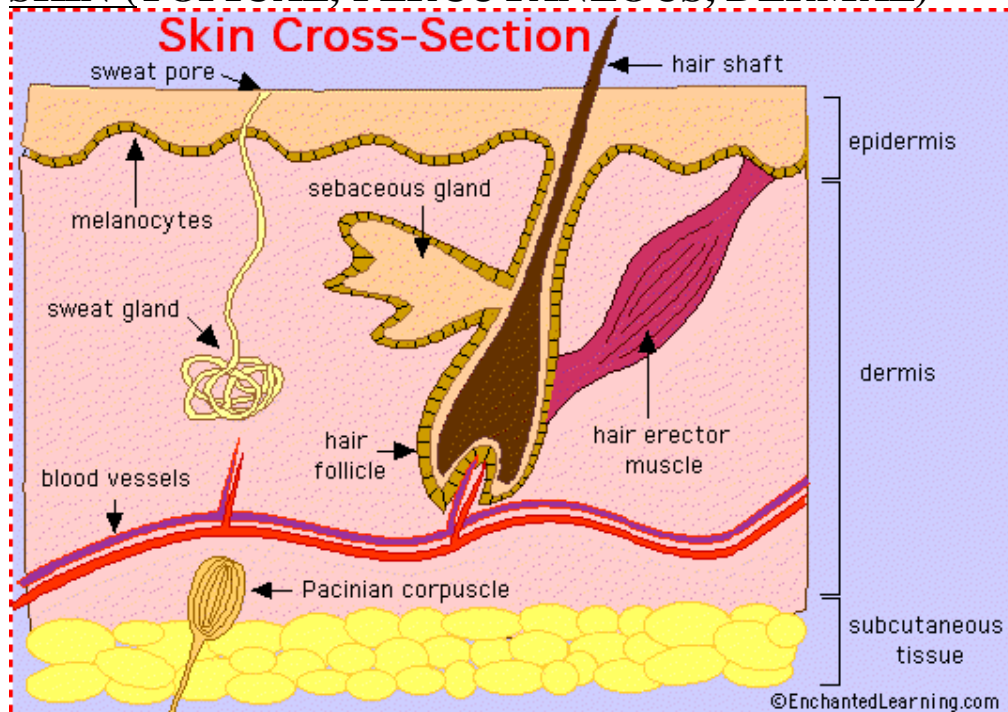


# LUNGS (INHALATION)

## The Lungs: Front View



# SKIN (TOPICAL, PERCUTANEOUS, DERMAL)



## **OTHER PARENTERAL ROUTES (OTHER THAN THE GUT)**

✓ **INJECTIONS**

✓ **BITE SITE**

✓ **PLACENTA**

CARPIN, NOVEMBER, 2005