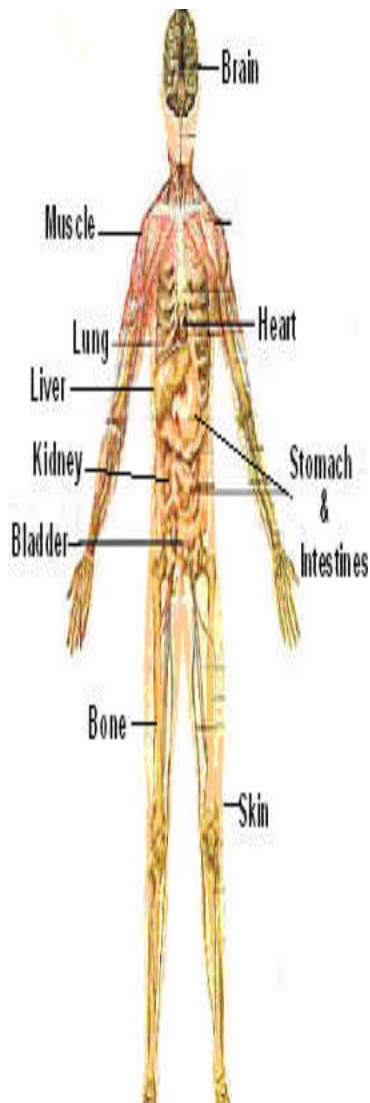




University of Technology, Jamaica  
Telephone: (876) 927-1680-8 ext. 2300  
or (876) 977-7777  
Cell: (876) 323-8907  
Fax: (876) 927-1699  
Toll Free: 1 888 POISONS (7647667)  
Email: [carpin@utech.edu.jm](mailto:carpin@utech.edu.jm)

## HOW POISONS AFFECT THE BODY

Poisons can affect many parts of the body such as:



### **The Brain and Spinal Cord (Nerves)**

**Poisons:** lead (used car batteries), medications, insecticides, alcohol.

**Symptoms:** headache, dizziness, confusion, depression, coma, convulsions (fits).

### **The Heart**

**Poisons:** periwinkle, oleander, medications,

**Symptoms:** racing heart, dizziness

### **The Lungs**

**Poisons:** kerosene oil, gasoline, car exhaust, fumes from household cleaners (especially if mixed with bleach).

**Symptoms:** irritation, coughing, choking, chest tightness, shortness of breath, wheezing.

### **The Kidneys**

**Poisons:** medications, alcohol.

**Symptoms:** lower back or side pain, urinating more or less than usual.

### **The Liver**

**Poisons:** bleach, medications, moth balls (camphor balls), alcohol.

**Symptoms:** jaundice, abdominal tenderness, pain and swelling.

### **The Stomach and Intestines**

**Poisons:** bleach, kerosene oil, household cleaners, medications, alcohol.

**Symptoms:** nausea, vomiting, diarrhea, abdominal pain and cramps.

### **Bones**

**Poisons:** lead (used car batteries), mercury.

**Symptoms:** easily fractured bones.

### **Muscles**

**Poisons:** lead (used car batteries), mercury, medications.

**Symptoms:** muscle weakness and pain.

### **Skin**

**Poisons:** kerosene oil, household cleaners (especially those with ammonia), plant and animal poisons.

**Symptoms:** rashes, itching, redness and swelling.

If you or anyone experience any of these symptoms, call **CARPIN** at 1-888- POISONS (7647667), the **police** at 119, or the **ambulance** at 110.

## **IMPORTANT**

Accidental poisoning is a notifiable event and **should be reported** to the **health centre of the parish** in which it occurs.

**PS** On the poster the picture would be larger and thus continue along the length of the paper with corresponding information.